

# SURFBOARDS®



THE BREADBOARDING MEDIUM FOR SURFACE MOUNT SM

## APPLICATION SPECIFIC ADAPTERS

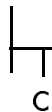
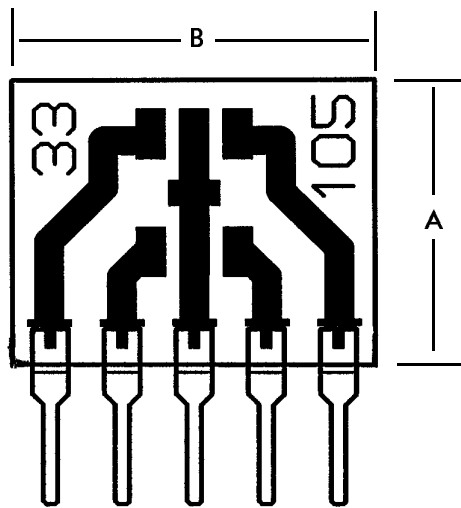
IDS33105 3-9-99

MODEL **33105**

ACCEPTS

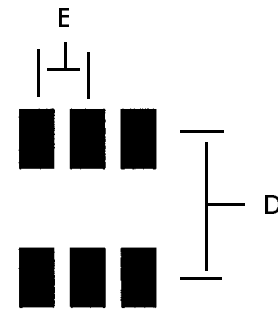
**SOT-89-5**

PROTOTYPING AND DEVICE  
EVALUATION TEST ADAPTER



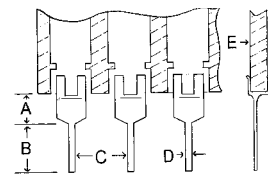
SINGLE-IN-LINE (SIP) PINS ON .100 IN CENTERS PROVIDE COMPATIBILITY WITH BREADBOARDS AND SOCKETS. SEE PIN SPECIFICATIONS TABLE.

NOTE\* PINS 2 AND 5 OF DEVICE FOOTPRINT ARE COMMON GROUND AND SHARE CENTER SIP PIN OF ADAPTER



DEVICE FOOTPRINT

### PIN SPECIFICATIONS / TOLERANCES



In Inches

A = .062 ± .006  
B = .130 ± .010  
C = .100 ± .005  
D = .020 ± .004  
E = .031 ± .005

FIG.	INCHES	MM
A	.400	10.16
B	.500	12.7
C	.100	2.54
D	.165	4.19
E	.060	1.5

### BOARD SPECIFICATIONS

BOARD MATERIAL: .031 ± .005 in. Thick G-10 FR-4 Glass Epoxy or equivalent.

CIRCUITS: 1oz Copper with solder coated pads.

TOLERANCES: Given in inches  
Board Size ± .020 / OAL ± .040  
Circuit pattern/position ± .005

Copyright 1997,1999 by Capital Advanced Technologies, Inc. All rights reserved. Surfboards are a registered trademark of Capital Advanced technologies, Inc. All other trademarks or registered trademarks are property of their respective owners. Availability, specifications, and prices are subject to change without notice. All information given is believed to be accurate but is not guaranteed. The user of information given or products represented by such information is responsible for determining the suitability of said information or products for a given purpose.

**CAPITAL ADVANCED TECHNOLOGIES, INC.**

CAROL STREAM, ILLINOIS. USA.

PHONE 630-690-1696 WWW.CapitalAdvanced.Com FAX-ON-DEMAND 630-690-2865